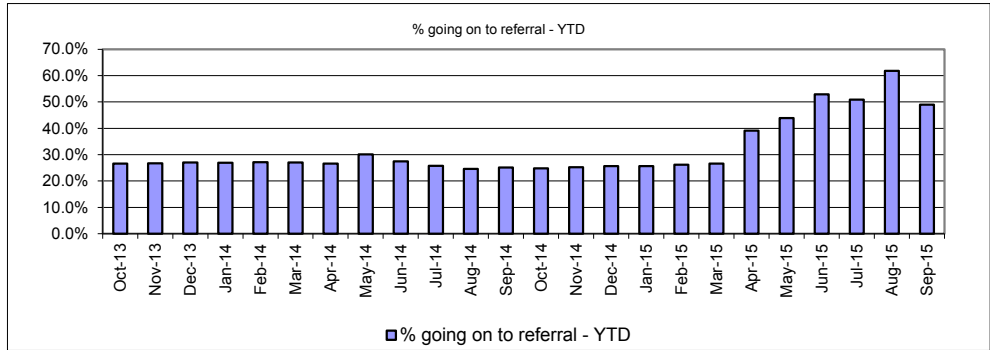
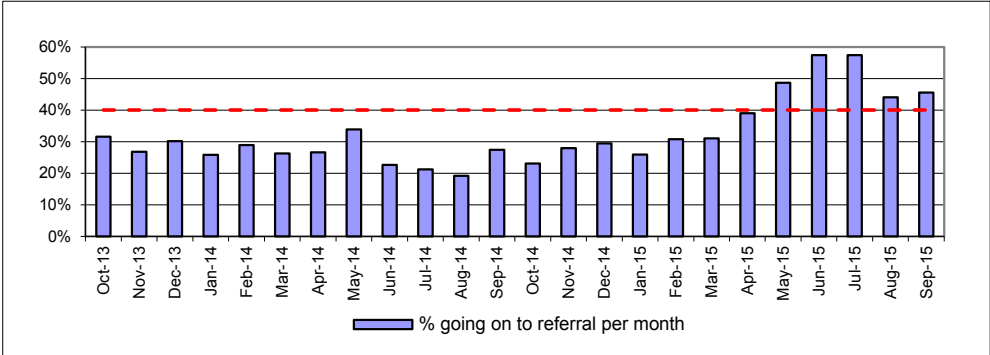


Chart 1

**Number of contacts and % going on to referral** **Sep-15**



Month	Refs	Contact	% Mnth	% YTD	Target	Var.	RAG
Oct-13	284	900	31.6%	26.6%	40.0%	-33.4%	G
Nov-13	210	783	26.8%	26.7%	40.0%	-33.3%	G
Dec-13	226	750	30.1%	27.1%	40.0%	-32.3%	G
Jan-14	213	825	25.8%	26.9%	40.0%	-32.7%	G
Feb-14	217	750	28.9%	27.1%	40.0%	-32.2%	G
Mar-14	249	947	26.3%	27.0%	40.0%	-32.4%	G
Apr-14	221	831	26.6%	26.6%	40.0%	-33.5%	G
May-14	260	767	33.9%	30.1%	40.0%	-24.8%	G
Jun-14	210	928	22.6%	27.4%	40.0%	-31.5%	G
Jul-14	194	913	21.2%	25.8%	40.0%	-35.5%	G
Aug-14	140	728	19.2%	24.6%	40.0%	-38.5%	G
Sep-14	254	927	27.4%	25.1%	40.0%	-37.3%	G
Oct-14	201	872	23.1%	24.8%	40.0%	-38.0%	G
Nov-14	237	848	27.9%	25.2%	40.0%	-37.0%	G
Dec-14	237	805	29.4%	25.6%	40.0%	-36.0%	G
Jan-15	213	821	25.9%	25.7%	40.0%	-35.8%	G
Feb-15	269	874	30.8%	26.2%	40.0%	-34.5%	G
Mar-15	302	972	31.1%	26.6%	40.0%	-33.5%	G
Apr-15	319	818	39.0%	39.2%	40.0%	-2.1%	G
May-15	418	860	48.6%	43.9%	40.0%	9.8%	G
Jun-15	505	880	57.4%	52.9%	40.0%	32.1%	G
Jul-15	538	938	57.4%	50.9%	40.0%	27.3%	G
Aug-15	314	713	44.0%	61.8%	40.0%	54.6%	G
Sep-15	423	929	45.5%	49.0%	40.0%	22.5%	G

YTD: **2,517** **5,138** **49.0%**

**Definition**  
 The table shows the number of referrals and contacts happening in each given month. The %Mnth column shows in that month alone, the crude conversion of contacts that went onto referrals. The %YTD column shows the year to date percentage of contacts going on to referrals.

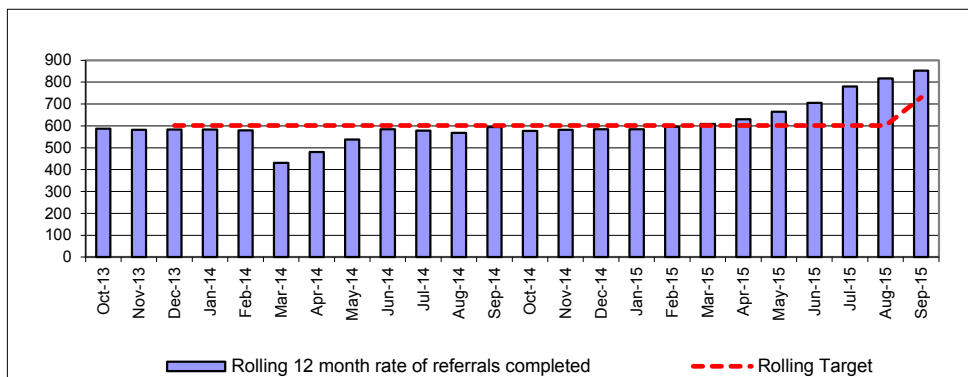
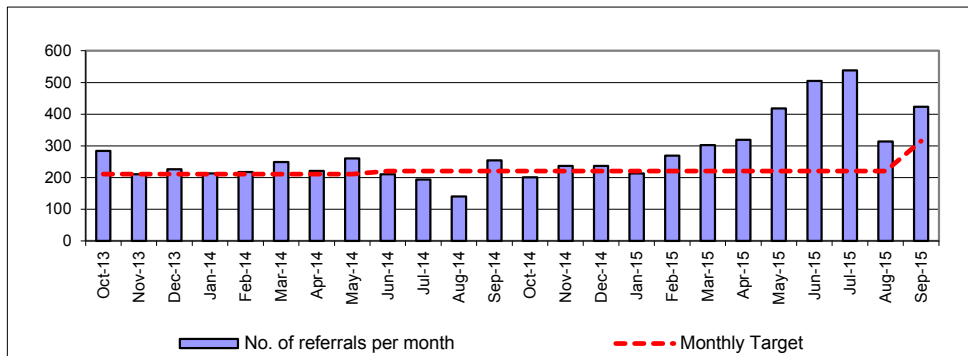
**G =40%** **A =+/- 10%** **R =+/- 20%**

**CSC Commentary**  
 Previous performance against this target has been variable, and the threshold guidance is now being applied more consistently in respect of all contacts. Activity this month has been slightly higher than the target, but is demonstrating the levelling out of performance over the last two months.

Chart 2

**Number of Referrals per 10,000 - Rolling 12 Months Performance**

**Sep-15**



Month	Refs	12 Mths	Rate	Target	Variance	RAG
Oct-13	284	2643	587.3	601.6	-2.4%	G
Nov-13	210	2618	581.8	601.6	-3.3%	G
Dec-13	226	2628	584.0	601.6	-2.9%	G
Jan-14	213	2625	583.3	601.6	-3.0%	G
Feb-14	217	2608	579.6	601.6	-3.7%	G
Mar-14	249	1533	431.1	601.6	-28.3%	G
Apr-14	221	1754	480.2	601.6	-20.2%	G
May-14	260	2014	538.0	601.6	-10.6%	G
Jun-14	210	2224	584.7	601.6	-2.8%	G
Jul-14	194	2418	578.2	601.6	-3.9%	G
Aug-14	140	2558	568.4	601.6	-5.5%	G
Sep-14	254	2678	595.1	601.6	-1.1%	A
Oct-14	201	2595	576.7	601.6	-4.1%	G
Nov-14	237	2621	582.4	601.6	-3.2%	G
Dec-14	237	2632	584.9	601.6	-2.8%	G
Jan-15	213	2632	584.9	601.6	-2.8%	G
Feb-15	269	2684	596.4	601.6	-0.9%	G
Mar-15	302	2738	608.2	601.6	1.1%	G
Apr-15	319	2836	630.0	601.6	4.7%	G
May-15	418	2994	664.9	601.6	10.5%	A
Jun-15	505	3289	705.8	601.6	17.3%	R
Jul-15	538	3633	779.6	601.6	29.6%	R
Aug-15	314	3807	817.0	601.6	35.8%	R

Sep-15	423	3976	853.2	730.5	16.8%	R
--------	-----	------	-------	-------	-------	---

**CSC Commentary**

The target for this indicator has been adjusted to reflect our statistical neighbours; performance and provide a more useful benchmark for the LA.  
 This indicator has fluctuated significantly over the last few months, partly due to changes in the MASH Hub. However, we remain above target currently. Work is being carried out by the Head of Service and Team Manager to ensure a consistent approach, and a multi-agency review of thresholds is underway by LSCB.

**Definition**

Number of referrals (rolling 12 months) divided by the population of 0-17 year olds in Peterborough multiplied by 10,000

Population for denominator: 46600

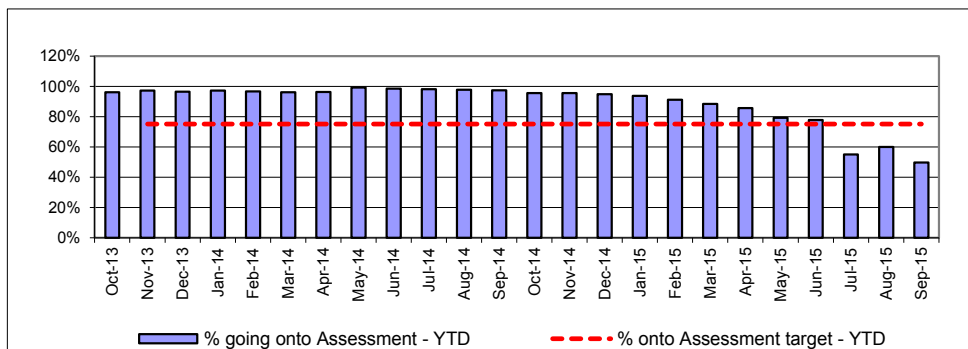
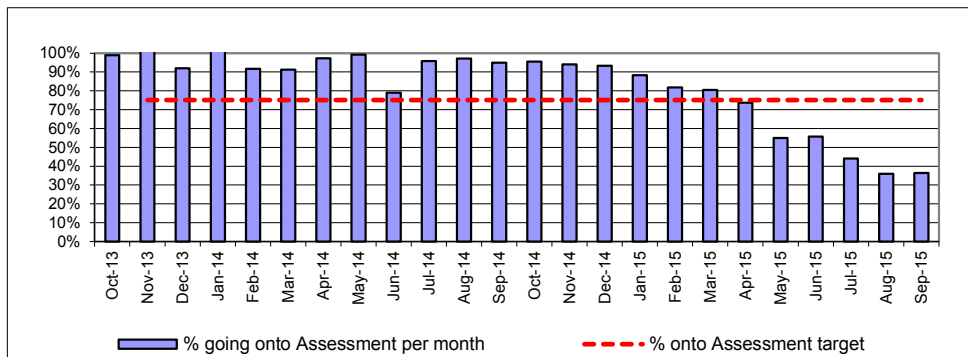
**G =730.5      A<745      R>745**

Year	PCC Result	SN Result	ENG Result
2013-14	577.7	730.5	573.0
2014-15	586.6	767.8	548.3
2015-16			

Chart 3

Referrals progressing to Single Assessment

Sep-15



CSC Commentary

Performance has slipped this month in relation to the target. Conversion rates are affected by contact to referral decisions, and also whether it has been possible to obtain parental consent at an early stage. This does also indicate application of thresholds, but should be addressed earlier in the referral journey. The Head of Service is working closely with Team Managers to address consistency issues, and would expect to see improved performances next month.

Month	Assess	Refs	% Mnth	% YTD	Target	Var	RAG
Oct-13	281	284	98.9%	96.1%	75.1%	21.0	G
Nov-13	218	210	103.8%	97.2%	75.1%	22.1	G
Dec-13	208	226	92.0%	96.5%	75.1%	21.4	G
Jan-14	220	213	103.3%	97.2%	75.1%	22.1	G
Feb-14	199	217	91.7%	96.7%	75.1%	21.6	G
Mar-14	227	249	91.2%	96.1%	75.1%	21.0	G
Apr-14	215	221	97.3%	96.2%	75.1%	21.1	G
May-14	258	260	99.2%	99.2%	75.1%	24.1	G
Jun-14	166	210	79.0%	98.5%	75.1%	23.4	G
Jul-14	186	194	95.9%	98.0%	75.1%	22.9	G
Aug-14	136	140	97.1%	97.8%	75.1%	22.7	G
Sep-14	241	254	94.9%	97.5%	75.1%	22.4	G
Oct-14	192	201	95.5%	95.6%	75.1%	20.5	G
Nov-14	223	237	94.1%	95.5%	75.1%	20.4	G
Dec-14	221	237	93.2%	94.9%	75.1%	19.8	G
Jan-15	188	213	88.3%	93.8%	75.1%	18.7	G
Feb-15	220	269	81.8%	91.2%	75.1%	16.1	G
Mar-15	243	302	80.5%	88.4%	75.1%	13.3	G
Apr-15	235	319	73.7%	85.6%	75.1%	10.5	G
May-15	230	418	55.0%	79.2%	75.1%	4.1	G
Jun-15	281	505	55.6%	77.7%	75.1%	2.6	G
Jul-15	237	538	44.1%	55.1%	75.1%	-20.0	R
Aug-15	113	314	36.0%	60.0%	75.1%	-15.1	R
Sep-15	154	423	36.4%	49.7%	75.1%	-25.4	R

YTD:	1,250	2,517	-	49.7%	75.1%	-25.4	G
------	-------	-------	---	-------	-------	-------	---

**Definition**  
The percentage of children referred to children's social services departments whose cases go on to initial assessments. The numerator is the number of initial assessments started in the period recorded on ICMS. The denominator is the number of referrals in the period recorded on ICMS.

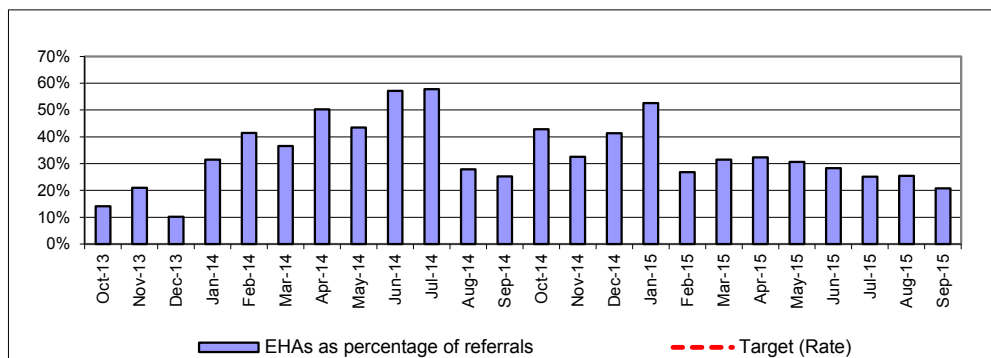
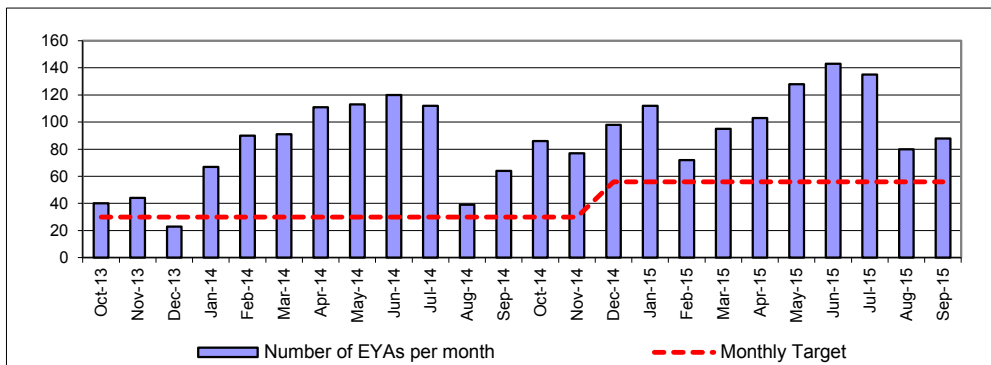
**G = 75.1%**      **A > 70%**      **R < 70%**

Year	PCC Result	SN Result	ENG Result
2012-13	84.4%	77.9%	74.4%
2013-14	20.1%	19.3%	19.4%
2014-15	39.0%	16.0%	23.0%

Chart 3a

**Early Help Assessments per 10,000 - Rolling 12 Months Performance**

**Sep-15**



Month	EYAs	12 Mths	Rate	EHA%
Oct-13	40	538	119.6	14.1%
Nov-13	44	520	115.6	21.0%
Dec-13	23	502	111.6	10.2%
Jan-14	67	292	64.9	31.5%
Feb-14	90	382	84.9	41.5%
Mar-14	91	473	105.1	36.5%
Apr-14	111	584	129.8	50.2%
May-14	113	697	154.9	43.5%
Jun-14	120	817	181.6	57.1%
Jul-14	112	849	188.7	57.7%
Aug-14	39	870	193.3	27.9%
Sep-14	64	914	203.1	25.2%
Oct-14	86	959	213.1	42.8%
Nov-14	77	992	220.4	32.5%
Dec-14	98	1066	236.9	41.4%
Jan-15	112	1113	246.9	52.6%
Feb-15	72	1095	243.3	26.8%
Mar-15	95	1099	244.0	31.5%
Apr-15	103	1091	242.0	32.3%
May-15	128	1106	242.4	30.6%
Jun-15	143	1129	242.3	28.3%
Jul-15	135	1152	247.2	25.1%
Aug-15	80	1193	256.0	25.5%
Sep-15	88	1217	261.2	20.8%

Target	Var.	RAG
80.8	48.0%	G
80.8	43.0%	G
80.8	38.1%	G
80.8	-19.7%	G
80.8	5.1%	G
80.8	30.1%	G
80.8	60.6%	G
147.9	4.7%	G
147.9	22.8%	G
147.9	27.6%	G
147.9	30.7%	G
147.9	37.3%	G
147.9	44.1%	G
147.9	49.0%	G
147.9	60.2%	G
147.9	66.9%	G
147.9	64.5%	G
147.9	65.0%	G
147.9	63.6%	G
147.9	63.9%	G
147.9	63.8%	G
147.9	67.1%	G
147.9	73.1%	G

**CSC Commentary**

Numbers of assessments are always lower during school holidays and pick up from September. The rate in August and September this year is higher than in the same month a year ago, indicating the continuing strong use of Early Help Assessments in the City.

**Definition**

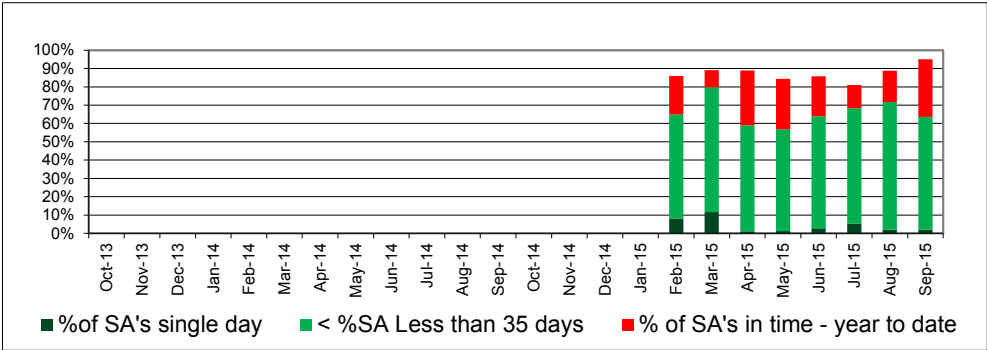
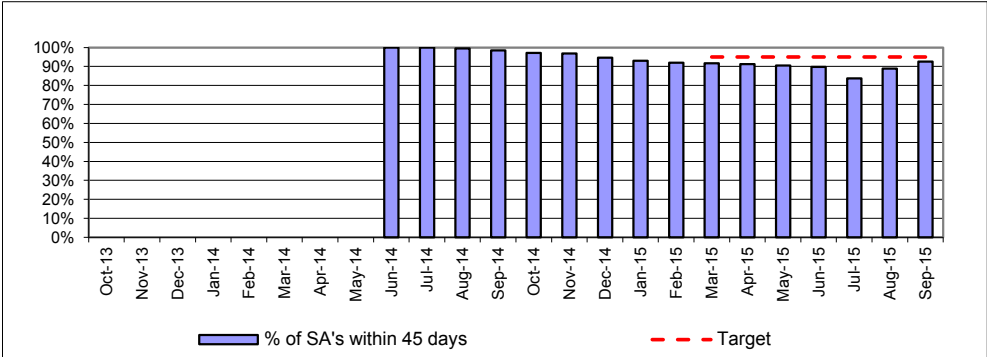
Number of new EYAs recorded in the month divided by the number of referrals that month (from Page 4). The rate is the number of new EYAs recorded in the previous 12 months divided by the population of 0-17 year olds in Peterborough multiplied by 10,000. The number of EYAs is taken from the local EHA tracker database and is not externally valid.

**G =TBC      A =TBC      R =TBC**

Year	SN Result	ENG Result
2012/13	-	-
2013/14	-	-
2014/15	-	-

Chart 4

**Single Assessment Timescales (within 45 working days) Sep-15**



Month	SA 45	SA 35	SA 1 day	SA All	% Mnth	% YTD	Target
Oct-13							
Nov-13							
Dec-13							
Jan-14							
Feb-14							
Mar-14							
Apr-14	0	0	0	0	0.0%	0.0%	
May-14	0	0	0	0	0.0%	0.0%	
Jun-14	32	32	20	32	100.0%	100.0%	
Jul-14	160	160	24	160	100.0%	100.0%	
Aug-14	205	178	21	206	99.5%	99.5%	
Sep-14	224	160	32	232	96.6%	98.4%	
Oct-14	238	188	22	253	94.1%	97.2%	
Nov-14	190	125	36	200	95.0%	96.8%	
Dec-14	240	206	31	278	86.3%	94.6%	
Jan-15	267	171	56	317	84.2%	93.0%	
Feb-15	213	141	20	248	85.9%	92.0%	
Mar-15	238	182	31	267	89.1%	91.7%	
Apr-15	256	167	3	288	88.9%	91.2%	
May-15	276	182	4	327	84.4%	90.5%	
Jun-15	287	205	9	335	85.7%	89.8%	
Jul-15	314	244	21	388	80.9%	83.7%	
Aug-15	270	212	6	304	88.8%	88.8%	
Sep-15	239	159	5	258	92.6%	92.6%	95.0%

<b>YTD:</b>	<b>1386</b>	<b>1002</b>	<b>45</b>	<b>1612</b>	<b>--</b>	<b>86.0%</b>	
-------------	-------------	-------------	-----------	-------------	-----------	--------------	--

**Definition**  
 The number of single assessments YTD completed within 45 working days from the start of the single assessment, as a percentage of the number of single assessments completed YTD.



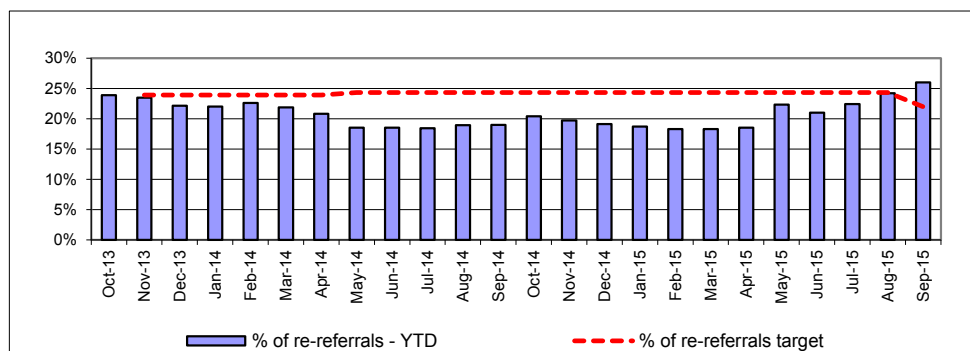
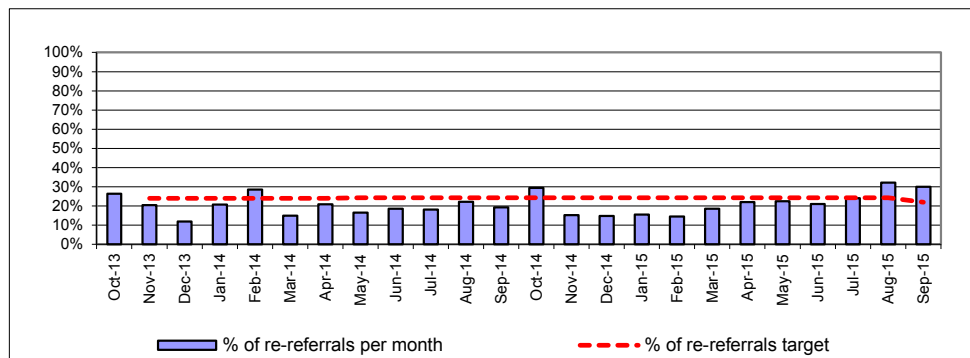
Year	PCC Result	SN Result	ENG Result
2012-13			
2013-14			
2014-15			

**CSC Commentary**  
 Performance on this has improved significantly in this area, and is now amber. Individual performance is being closely monitored to ensure the target is met in future.

Chart 4a

Re-referrals within 12 months

Sep-15



Month	Re-Refs	Refs	% Mnth	% YTD	Target	Var	RAG
Oct-13	75	284	26.4%	23.9%	23.9%	0.0	G
Nov-13	43	210	20.5%	23.5%	23.9%	-0.4	G
Dec-13	27	226	11.9%	22.1%	23.9%	-1.8	G
Jan-14	44	213	20.7%	22.0%	23.9%	-1.9	G
Feb-14	62	217	28.6%	22.6%	23.9%	-1.3	G
Mar-14	37	249	14.9%	21.9%	23.9%	-2.0	G
Apr-14	46	221	20.8%	20.8%	23.9%	-3.1	G
May-14	43	260	16.5%	18.5%	24.3%	-5.8	G
Jun-14	39	210	18.6%	18.5%	24.3%	-5.8	G
Jul-14	35	194	18.0%	18.4%	24.3%	-5.9	G
Aug-14	31	140	22.1%	18.9%	24.3%	-5.4	G
Sep-14	49	254	19.3%	19.0%	24.3%	-5.3	G
Oct-14	59	201	29.4%	20.4%	24.3%	-3.9	G
Nov-14	36	237	15.2%	19.7%	24.3%	-4.6	G
Dec-14	35	237	14.8%	19.1%	24.3%	-5.2	G
Jan-15	33	213	15.5%	18.7%	24.3%	-5.6	G
Feb-15	39	269	14.5%	18.3%	24.3%	-6.0	G
Mar-15	56	302	18.5%	18.3%	24.3%	-6.0	G
Apr-15	70	319	21.9%	18.5%	24.3%	-5.8	G
May-15	94	418	22.5%	22.3%	24.3%	-2.0	G
Jun-15	106	505	21.0%	21.0%	24.3%	-3.3	G
Jul-15	129	538	24.0%	22.4%	24.3%	-1.9	G
Aug-15	101	314	32.2%	24.2%	24.3%	-0.1	G
Sep-15	127	423	30.0%	26.0%	22.0%	4.0	R

<b>YTD:</b>	<b>463</b>	<b>1,780</b>	<b>--</b>	<b>26.0%</b>	<b>24.3%</b>	<b>1.7</b>	<b>R</b>
-------------	------------	--------------	-----------	--------------	--------------	------------	----------

CSC Commentary

The target for this indication has been adjusted to 22% due to our strong performance in this area. This month's performance has seen a reduction on the previous month, although it is still above target. This will be monitored closely, as it is possible that more consistent application of thresholds may result in more repeat referrals.

**Definition**  
The percentage of referrals where a previous referral has occurred within the last 12 months. If a child has more than one re-referral in the year, each one will be counted.

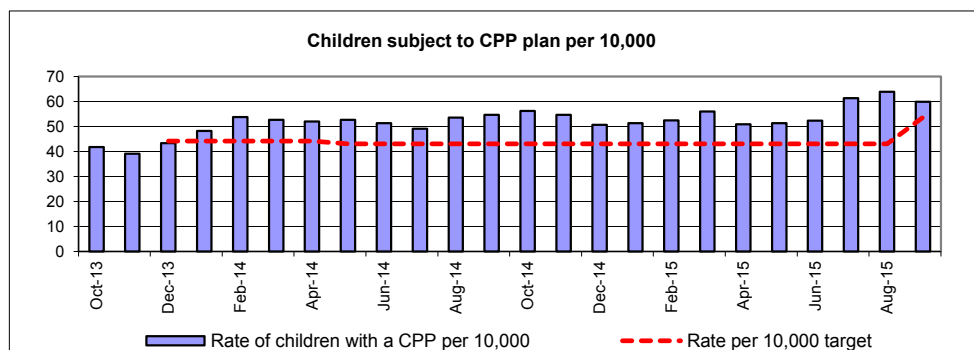
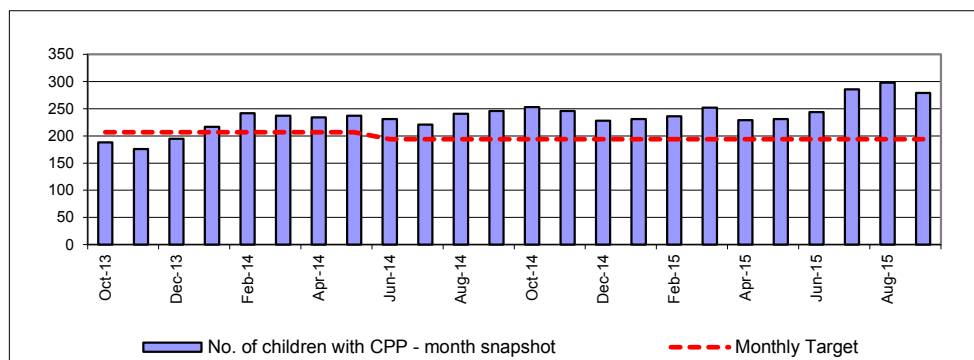
<b>G&lt;=22.0%</b>	<b>A&gt;22%</b>	<b>R&gt;24%</b>
--------------------	-----------------	-----------------

Year	PCC Result	SN Result	ENG Result
2012-13	33.5%	24.3%	24.9%
2013-14	21.8%	24.9%	23.4%
2014-15	18.3%	25.8%	24.0%

Chart 5

Number of Children with a Child Protection Plan per 10,000

Sep-15



Month	CP	Pop.	Rate	Target	Variance	RAG
Oct-13	188	45000	41.8	44.2	-5.5%	G
Nov-13	176	45000	39.1	44.2	-11.5%	G
Dec-13	195	45000	43.3	44.2	-2.0%	A
Jan-14	217	45000	48.2	44.2	9.1%	G
Feb-14	242	45000	53.8	44.2	21.7%	G
Mar-14	237	45000	52.7	44.2	19.2%	R
Apr-14	234	45000	52.0	44.2	17.6%	R
May-14	237	45000	52.7	43.1	22.2%	R
Jun-14	231	45000	51.3	43.1	19.1%	R
Jul-14	221	45000	49.1	43.1	13.9%	R
Aug-14	241	45000	53.6	43.1	24.3%	A
Sep-14	246	45000	54.7	43.1	26.8%	R
Oct-14	253	45000	56.2	43.1	30.4%	R
Nov-14	246	45000	54.7	43.1	26.8%	R
Dec-14	228	45000	50.7	43.1	17.6%	R
Jan-15	231	45000	51.3	43.1	19.1%	R
Feb-15	236	45000	52.4	43.1	21.7%	R
Mar-15	252	45000	56.0	43.1	29.9%	R
Apr-15	229	45000	50.9	43.1	18.1%	R
May-15	231	45000	51.3	43.1	19.1%	R
Jun-15	244	46600	52.4	43.1	21.5%	R
Jul-15	286	46600	61.4	43.1	42.4%	R
Aug-15	298	46600	63.9	43.1	48.4%	R
Sep-15	279	46600	59.9	53.6	11.7%	R

CSC Commentary

The number of children with a child protection plan is higher than the target set, there is ongoing threshold work and review of all children subject to a plan across services to ensure only the right children are on a plan.

Definition

Number of children with a current child protection plan divided by the population of 0-17 year olds in Peterborough multiplied by 10,000. The number of children is taken as a snapshot count at the end of each month

Population for denominator: 46600

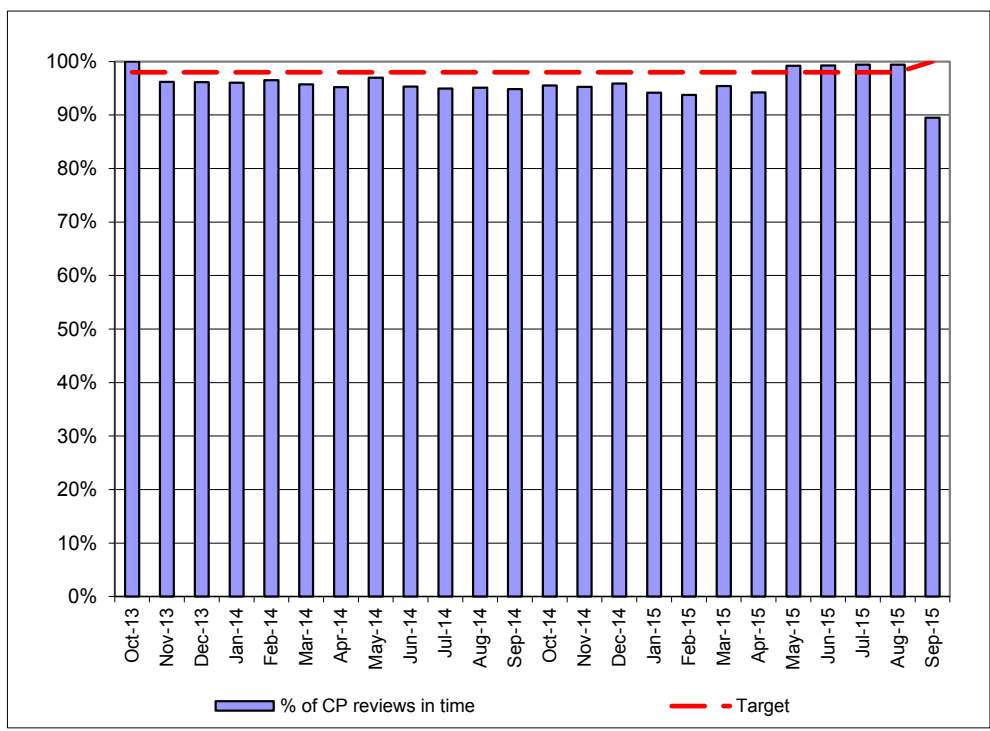
**G = 53.6**      **A < 55**      **R > 55**

Year	PCC Result	SN Result	ENG Result
2012-13	60.3	43.1	37.9
2013-14	52.4	54.0	42.1
2014-15	49.6	55.5	42.9

Chart 6

**NI 67 - Child Protection Review Timescales** **Sep-15**

100



Month	Num.	Denom.	%	Target	Variance	RAG
Oct-13	154	154	100.0%	98.0%	2.0	G
Nov-13	126	131	96.2%	98.0%	-1.8	G
Dec-13	124	129	96.1%	98.0%	-1.9	A
Jan-14	121	126	96.0%	98.0%	-2.0	A
Feb-14	139	144	96.5%	98.0%	-1.5	A
Mar-14	112	117	95.7%	98.0%	-2.3	A
Apr-14	99	104	95.2%	98.0%	-2.8	A
May-14	161	166	97.0%	98.0%	-1.0	A
Jun-14	162	170	95.3%	98.0%	-2.7	A
Jul-14	151	159	95.0%	98.0%	-3.0	A
Aug-14	156	164	95.1%	98.0%	-2.9	A
Sep-14	148	156	94.9%	98.0%	-3.1	A
Oct-14	149	156	95.5%	98.0%	-2.5	A
Nov-14	161	169	95.3%	98.0%	-2.7	A
Dec-14	163	170	95.9%	98.0%	-2.1	A
Jan-15	161	171	94.2%	98.0%	-3.8	A
Feb-15	165	176	93.8%	98.0%	-4.3	A
Mar-15	146	153	95.4%	98.0%	-2.6	A
Apr-15	131	139	94.2%	98.0%	-3.8	A
May-15	123	124	99.2%	98.0%	1.2	G
Jun-15	139	140	99.3%	98.0%	1.3	G
Jul-15	164	165	99.4%	98.0%	1.4	G
Aug-15	168	169	99.4%	98.0%	1.4	G
Sep-15	162	181	89.5%	100.0%	-10.5	R

**CSC Commentary**  
 Performance in this area is good. There is always a delay in the system catching up with confernees held in the most recent month. This is because the confernece is not recorded by the system as having been held until the minutes are uploaded onto the system. This is corrected in the following month's performance report.

**Definition**  
 The percentage of children with a Child Protection Plan for at least the previous three months, reviewed within the required timescales.

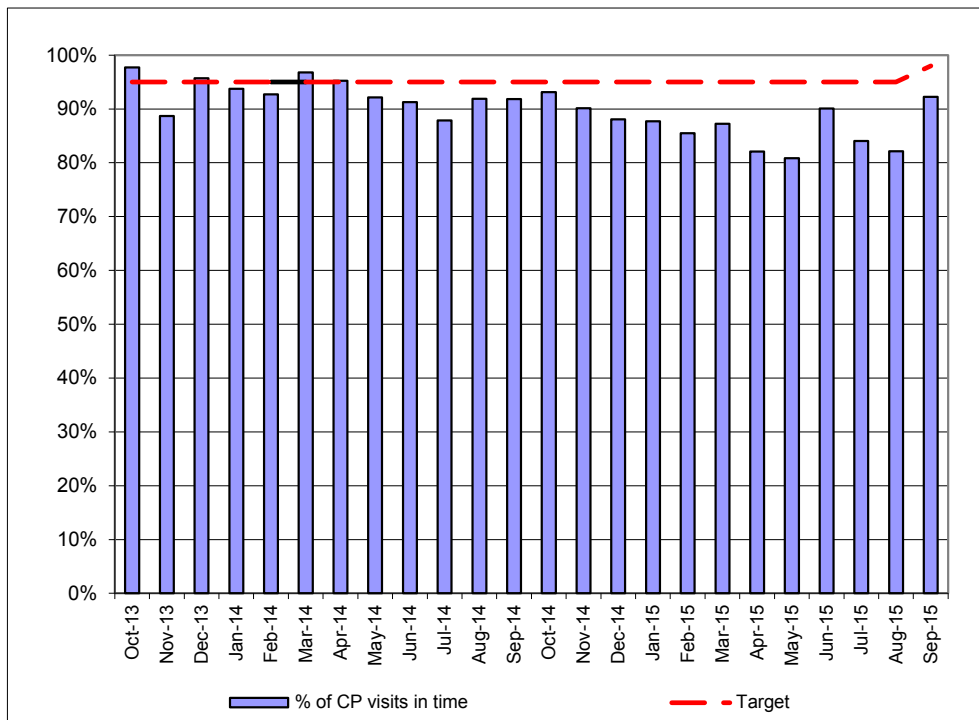
**G =100%**      **A >98% <100%**      **R <98%**

Year	PCC Result	SN Result	ENG Result
2012-13	98.3%	97.8%	96.2%
2013-14	95.8%	96.0%	94.6%
2014-15	93.4%	91.7%	94.0%



Chart 7

**Child protection visits in time** Sep-15



Month	Num.	Denom.	%	Target	Variance	RAG
Oct-13	170	174	97.7%	95.0%	2.7	R
Nov-13	141	159	88.7%	95.0%	-6.3	G
Dec-13	156	163	95.7%	95.0%	0.7	A
Jan-14	165	176	93.8%	95.0%	-1.3	G
Feb-14	191	206	92.7%	95.0%	-2.3	A
Mar-14	209	216	96.8%	95.0%	1.8	A
Apr-14	199	209	95.2%	95.0%	0.2	G
May-14	200	217	92.2%	95.0%	-2.8	G
Jun-14	198	217	91.2%	95.0%	-3.8	A
Jul-14	181	206	87.9%	95.0%	-7.1	A
Aug-14	193	210	91.9%	95.0%	-3.1	A
Sep-14	202	220	91.8%	95.0%	-3.2	A
Oct-14	203	218	93.1%	95.0%	-1.9	A
Nov-14	210	233	90.1%	95.0%	-4.9	A
Dec-14	199	226	88.1%	95.0%	-6.9	A
Jan-15	178	203	87.7%	95.0%	-7.3	A
Feb-15	171	200	85.5%	95.0%	-9.5	A
Mar-15	178	204	87.3%	95.0%	-7.7	A
Apr-15	165	201	82.1%	95.0%	-12.9	A
May-15	169	209	80.9%	95.0%	-14.1	R
Jun-15	191	212	90.1%	95.0%	-4.9	R
Jul-15	195	232	84.1%	95.0%	-10.9	A
Aug-15	225	274	82.1%	95.0%	-12.9	R
Sep-15	249	270	92.2%	98.0%	-5.8	R

**CSC Commentary**  
 There has been a steady increase in the level of visiting over recent months. The more significant increase in September coincides with the implementation of a more consistent approach by all team managers, who have set dates with social workers for bringing visiting to expected levels. It is now the expectation that where any social worker is unavailable to complete a visit, a colleague is asked to undertake the visit in their place. All team managers must now provide a written individual reason on a weekly basis as to why a child was not seen in time and a setting a date for the planned visit that week. There are a small number of children overseas (approx 2%) which accounts for some visits not taking place in timescales.

**Definition**  
 Of all children subject to a child protection plan for more than 4 weeks, the number and percentage of visits that were done within the 4 week deadline. This is snapshot data taken at the month end.

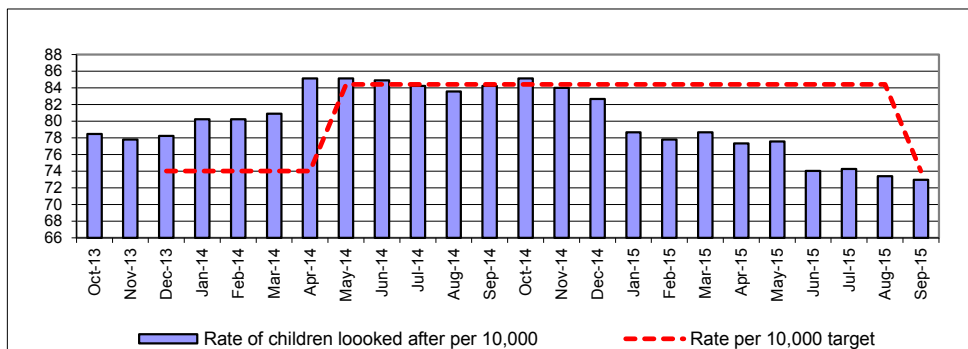
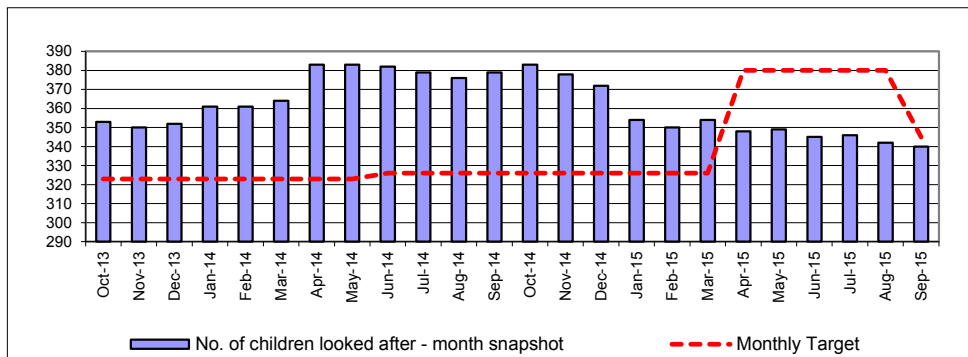
**G = 98%**      **A > 96-98%**      **R < 96%**

Year	PCC Result	SN Result	ENG Result

Chart 8

Number of Children Looked After per 10,000

Sep-15



Month	CLA	Pop.	Rate	Target	Variance	RAG
Oct-13	353	45000	78.4	74.0	6.0%	A
Nov-13	350	45000	77.8	74.0	5.1%	A
Dec-13	352	45000	78.2	74.0	5.7%	A
Jan-14	361	45000	80.2	74.0	8.4%	A
Feb-14	361	45000	80.2	74.0	8.4%	R
Mar-14	364	45000	80.9	74.0	9.3%	R
Apr-14	383	45000	85.1	74.0	15.0%	R
May-14	383	45000	85.1	84.4	0.8%	G
Jun-14	382	45000	84.9	84.4	0.6%	G
Jul-14	379	45000	84.2	84.4	-0.2%	G
Aug-14	376	45000	83.6	84.4	-1.0%	G
Sep-14	379	45000	84.2	84.4	-0.2%	G
Oct-14	383	45000	85.1	84.4	0.8%	G
Nov-14	378	45000	84.0	84.4	-0.5%	G
Dec-14	372	45000	82.7	84.4	-2.1%	G
Jan-15	354	45000	78.7	84.4	-6.8%	G
Feb-15	350	45000	77.8	84.4	-7.8%	G
Mar-15	354	45000	78.7	84.4	-6.8%	G
Apr-15	348	45000	77.3	84.4	-8.4%	G
May-15	349	45000	77.6	84.4	-8.1%	G
Jun-15	345	46600	74.0	84.4	-12.3%	G
Jul-15	346	46600	74.2	84.4	-12.0%	G
Aug-15	342	46600	73.4	84.4	-13.0%	G
Sep-15	340	46600	73.0	74.0	-1.4%	

CSC Commentary

Target has been amended as per 10,000 population. This is a more challenging target. However the performance is graded good in this area.

Definition

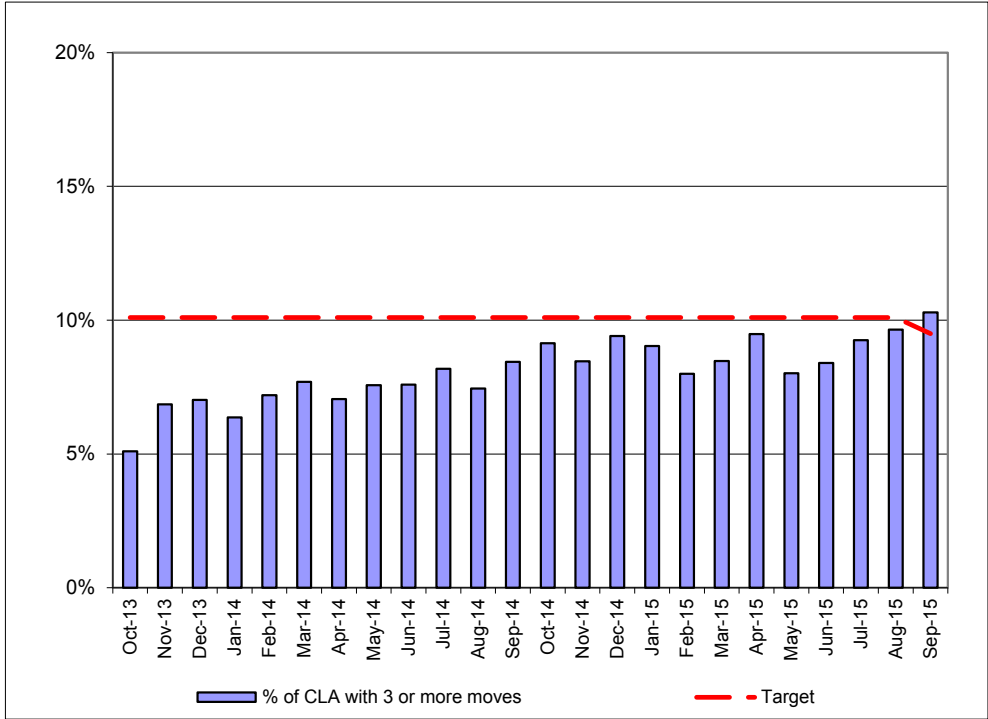
Number of children currently looked after divided by the population of 0-17 year olds in Peterborough multiplied by 10,000  
 The number of children looked after is taken as a snapshot count at the end of each month  
 Population for denominator: 46600

**G = 74.0**      **A>74.0**      **R>79.4**

Year	PCC Result	SN Result	ENG Result
2012-13	78.0	78.0	60.0
2013-14	80.0	77.2	60.0
2014-15	74.0	79.4	60.0

Chart 9

**NI 62 - LAC Placement Stability: 3 or more placements during previous 12 months** **Sep-15**



Month	Num.	Denom.	%	Target	Variance	RAG
Oct-13	18	353	5.1%	10.1%	-5.0	G
Nov-13	24	350	6.9%	10.1%	-3.2	G
Dec-13	25	356	7.0%	10.1%	-3.1	G
Jan-14	23	361	6.4%	10.1%	-3.7	G
Feb-14	26	361	7.2%	10.1%	-2.9	G
Mar-14	28	364	7.7%	10.1%	-2.4	G
Apr-14	27	383	7.0%	10.1%	-3.1	G
May-14	29	383	7.6%	10.1%	-2.5	G
Jun-14	29	382	7.6%	10.1%	-2.5	G
Jul-14	31	379	8.2%	10.1%	-1.9	G
Aug-14	28	376	7.4%	10.1%	-2.7	G
Sep-14	32	379	8.4%	10.1%	-1.7	G
Oct-14	35	383	9.1%	10.1%	-1.0	G
Nov-14	32	378	8.5%	10.1%	-1.6	G
Dec-14	35	372	9.4%	10.1%	-0.7	G
Jan-15	32	354	9.0%	10.1%	-1.1	G
Feb-15	28	350	8.0%	10.1%	-2.1	G
Mar-15	30	354	8.5%	10.1%	-1.6	G
Apr-15	33	348	9.5%	10.1%	-0.6	G
May-15	28	349	8.0%	10.1%	-2.1	G
Jun-15	29	345	8.4%	10.1%	-1.7	G
Jul-15	32	346	9.2%	10.1%	-0.9	G
Aug-15	33	342	9.6%	10.1%	-0.5	G
Sep-15	35	340	10.3%	9.5%	0.8	A

103

**CSC Commentary**  
 The performance of this indicator remains good and below the SN and ENG average. There has been a slight increase in the number and % of children who have experienced 3 or more moves in September. This will need monitoring to ensure the trend doesn't continue as there has been an incremental rise since May. Additional monitoring and challenge will be set up in the placement service to address this.

**Definition**  
 The percentage of children looked after at any given time with three or more placements during the last 12 months. All placements of 24 hours or more are counted. All placements regarded as temporary are included, except: • temporary periods on holiday or in hospital; • where a foster carer goes on holiday for 21 days or less and the child temporarily stays with another  
 Population for denominator: 46600

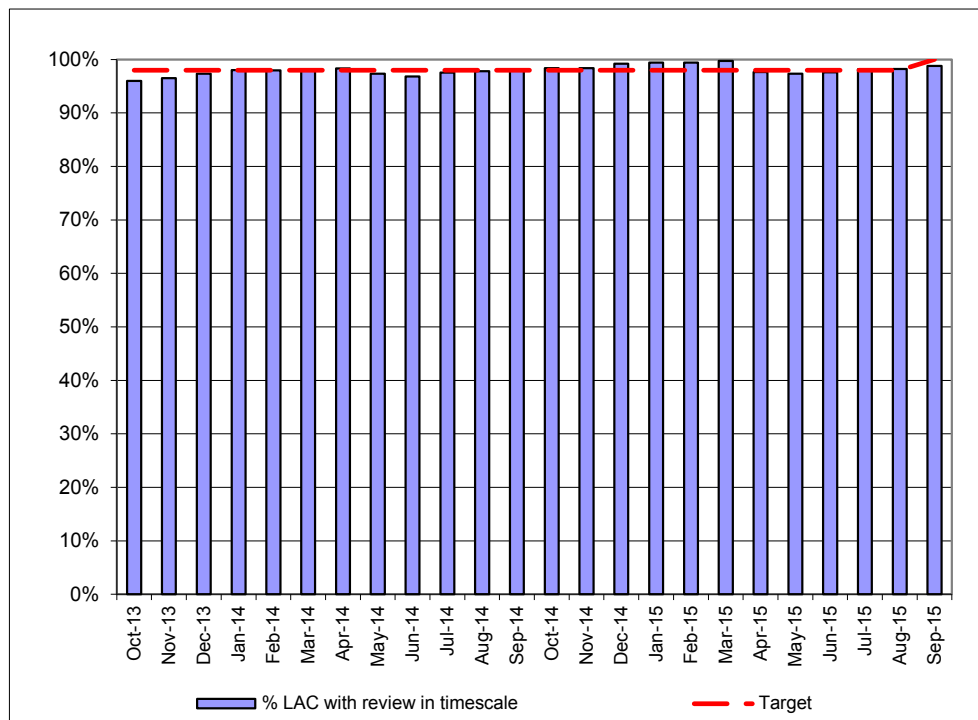
**G = 9.5%**      **A > 9.5-11.3%**      **R > 11.3%**

Year	PCC Result	SN Result	ENG Result
2012-13	11.1%	10.3%	11.1%
2013-14	9.0%	11.3%	11.0%
2014-15	8.5%		

Chart 10

NI 66 - CLA Review Timescales - Year to Date Performance

Sep-15



Month	Num.	Denom.	%	Target	Variance	RAG
Oct-13	333	347	96.0%	98.0%	-2.0	A
Nov-13	332	344	96.5%	98.0%	-1.5	A
Dec-13	331	340	97.4%	98.0%	-0.6	A
Jan-14	344	351	98.0%	98.0%	0.0	A
Feb-14	340	347	98.0%	98.0%	0.0	G
Mar-14	334	341	97.9%	98.0%	-0.1	G
Apr-14	358	364	98.4%	98.0%	0.4	A
May-14	367	377	97.3%	98.0%	-0.7	G
Jun-14	366	378	96.8%	98.0%	-1.2	A
Jul-14	360	369	97.6%	98.0%	-0.4	A
Aug-14	360	368	97.8%	98.0%	-0.2	A
Sep-14	364	371	98.1%	98.0%	0.1	A
Oct-14	360	366	98.4%	98.0%	0.4	G
Nov-14	363	369	98.4%	98.0%	0.4	G
Dec-14	386	389	99.2%	98.0%	1.2	G
Jan-15	345	347	99.4%	98.0%	1.4	G
Feb-15	337	339	99.4%	98.0%	1.4	G
Mar-15	342	343	99.7%	98.0%	1.7	G
Apr-15	330	338	97.6%	98.0%	-0.4	G
May-15	330	339	97.3%	98.0%	-0.7	G
Jun-15	322	330	97.6%	98.0%	-0.4	G
Jul-15	326	332	98.2%	98.0%	0.2	G
Aug-15	331	337	98.2%	98.0%	0.2	G
Sep-15	330	334	98.8%	100.0%	-1.2	A

104

**CSC Commentary**

The responsible head of service is making enquiries in relation to this indicator as was not aware that any review had gone out of timescale. This may be the result of minutes not being logged on the system in time for the data being collected for the September report.

**Definition**

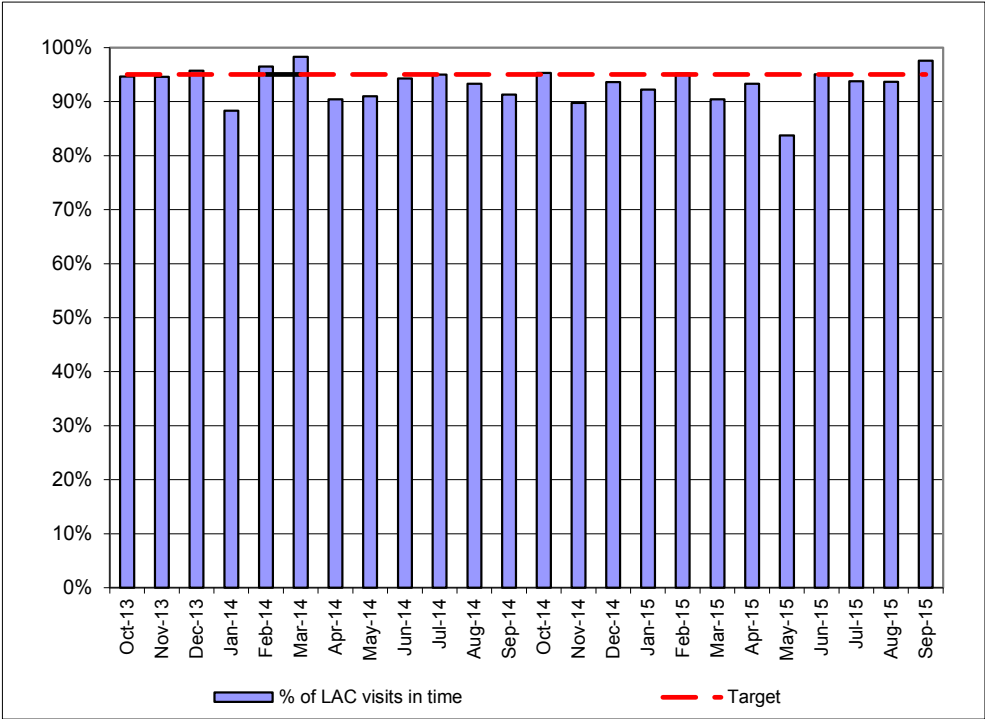
The percentage of Looked after children for at least one month, whose case was reviewed within the required timescales. The denominator is children who are LAC for at least one month at the end of the reporting month. The numerator is the number of children who have not had a

**G = 100%**      **A > 98%**      **R < 98%**

Year	PCC Result	SN Result	ENG Result
2012-13			
2013-14			
2014-15			

Chart 11

**Looked after children visits in time** **Sep-15**



Month	Num.	Denom.	%	Target	Variance	RAG
Oct-13	318	336	94.6%	95.0%	-0.4	G
Nov-13	314	332	94.6%	95.0%	-0.4	G
Dec-13	314	328	95.7%	95.0%	0.7	G
Jan-14	302	342	88.3%	95.0%	-6.7	G
Feb-14	330	342	96.5%	95.0%	1.5	A
Mar-14	339	345	98.3%	95.0%	3.3	G
Apr-14	320	354	90.4%	95.0%	-4.6	G
May-14	342	376	91.0%	95.0%	-4.0	A
Jun-14	344	365	94.2%	95.0%	-0.8	A
Jul-14	341	359	95.0%	95.0%	0.0	A
Aug-14	333	357	93.3%	95.0%	-1.7	G
Sep-14	325	356	91.3%	95.0%	-3.7	A
Oct-14	346	363	95.3%	95.0%	0.3	A
Nov-14	323	360	89.7%	95.0%	-5.3	G
Dec-14	337	360	93.6%	95.0%	-1.4	G
Jan-15	319	346	92.2%	95.0%	-2.8	A
Feb-15	317	333	95.2%	95.0%	0.2	G
Mar-15	302	334	90.4%	95.0%	-4.6	G
Apr-15	307	329	93.3%	95.0%	-1.7	G
May-15	278	332	83.7%	95.0%	-11.3	A
Jun-15	308	324	95.1%	95.0%	0.1	G
Jul-15	300	320	93.8%	95.0%	-1.3	G
Aug-15	311	332	93.7%	95.0%	-1.3	G
Sep-15	320	328	97.6%	95.0%	2.6	G

**CSC Commentary**  
 97.6% visits completed in time. This exceeds the target of 95%. This demonstrates good performance over a 5 month period.

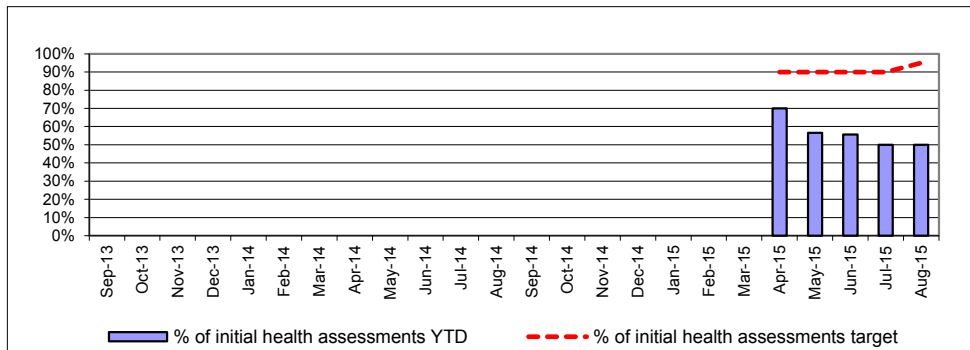
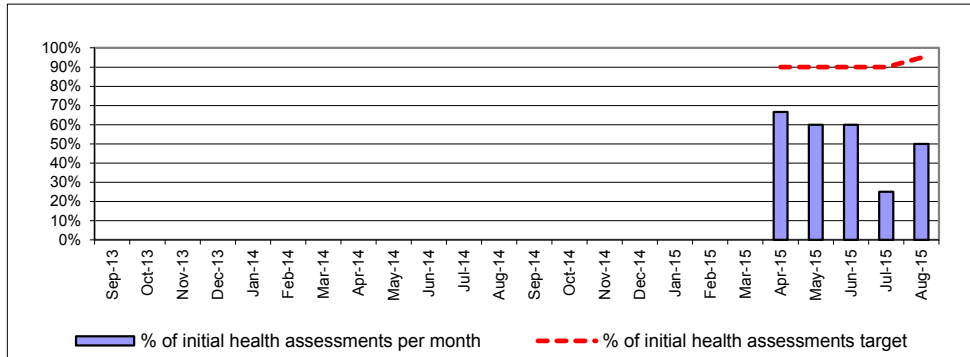
**Definition**  
 Of all Looked After Children that have been looked after for more than 6 weeks, the number and percentage of visits that were completed within the 6 week deadline (or within three months for those Looked After Children that have been looked after for more than 12 months and whose placement is deemed to be permanent).  
 This is snapshot data taken at the month end.

**G = 95%**      **A > 90%**      **R < 90%**

Year	PCC Result	SN Result	ENG Result

Chart 12

**Initial health assessments completed within 28 days of child becoming looked after** **Sep-15**



Month	Init.HA	CLA St	% Mnth	% YTD	Target	Var	RAG
Oct-13							
Nov-13							
Dec-13							
Jan-14							
Feb-14							
Mar-14							
Apr-14							
May-14							
Jun-14							
Jul-14							
Aug-14							
Sep-14							
Oct-14							
Nov-14							
Dec-14							
Jan-15							
Feb-15							
Mar-15							
Apr-15	8	12	66.7%	70.0%	90.0%	-20.0	R
May-15	6	10	60.0%	56.5%	90.0%	-33.5	R
Jun-15	12	20	60.0%	55.6%	90.0%	-34.4	R
Jul-15	5	20	25.0%	50.0%	90.0%	-40.0	R
Aug-15	7	14	50.0%	50.0%	95.0%	-45.0	R

<b>YTD:</b>	<b>38</b>	<b>76</b>	<b>--</b>	<b>50.0%</b>	<b>95.0%</b>	<b>-45.0</b>	<b>R</b>
-------------	-----------	-----------	-----------	--------------	--------------	--------------	----------

**CSC Commentary**

The data recording for this performance indicator is incorrect. Work is in progress to amend reporting systems. Recording information received from Access to Resources Team shows that 55% of Health Assessments completed within timescales. This is still too low and new Head of Service for Looked After Children is continuing to review how performance can be improved.

**Definition**

The number of children becoming looked after that have an initial health assessment recorded within 28 calendar days of the child becoming looked after. The number of children is measured one month in arrears to enable time for the 28 day period to elapse and excludes cases where the episode of care was closed within 28 days and also children becoming looked after because they have been placed on remand (because the remand institution is responsible for completing the initial health assessment).

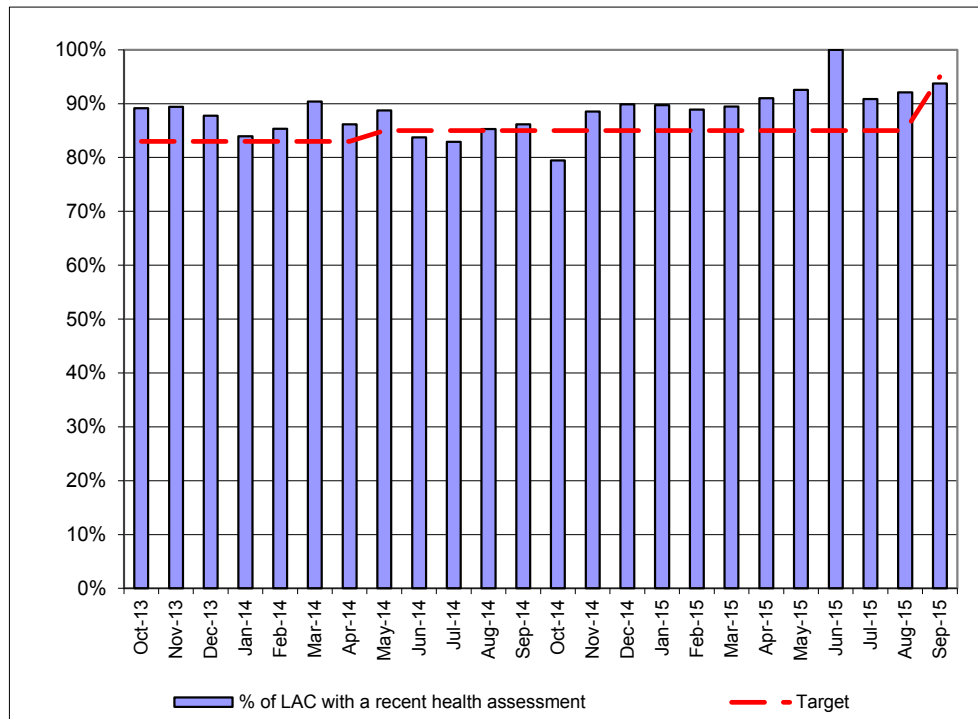
<b>G &gt;= 95%</b>	<b>A &gt; 85 -95%</b>	<b>R &lt; 85%</b>
--------------------	-----------------------	-------------------

Year	PCC Result	SN Result	ENG Result
2012-13	-	-	-
2013-14	-	-	-
2014-15	-	-	-

Chart 13

Health of Looked After Children - Health Assessments

Sep-15



Month	Num.	Denom.	% YTD	Target	Variance	RAG
Oct-13	214	240	89.2%	83.0%	6.2	G
Nov-13	220	246	89.4%	83.0%	6.4	G
Dec-13	215	245	87.8%	83.0%	4.8	G
Jan-14	204	243	84.0%	83.0%	1.0	G
Feb-14	204	239	85.4%	83.0%	2.4	G
Mar-14	225	249	90.4%	83.0%	7.4	G
Apr-14	224	260	86.2%	83.0%	3.2	G
May-14	236	266	88.7%	85.0%	3.7	G
Jun-14	221	264	83.7%	85.0%	-1.3	G
Jul-14	218	263	82.9%	85.0%	-2.1	A
Aug-14	226	265	85.3%	85.0%	0.3	A
Sep-14	230	267	86.1%	85.0%	1.1	G
Oct-14	205	258	79.5%	85.0%	-5.5	G
Nov-14	232	262	88.5%	85.0%	3.5	A
Dec-14	239	266	89.8%	85.0%	4.8	G
Jan-15	227	253	89.7%	85.0%	4.7	G
Feb-15	224	252	88.9%	85.0%	3.9	G
Mar-15	229	256	89.5%	85.0%	4.5	G
Apr-15	232	255	91.0%	85.0%	6.0	G
May-15	237	256	92.6%	85.0%	7.6	G
Jun-15	253	253	100.0%	85.0%	15.0	G
Jul-15	219	241	90.9%	85.0%	5.9	G
Aug-15	221	240	92.1%	85.0%	7.1	G
Sep-15	224	239	93.7%	95.0%	-1.3	A

107

CSC Commentary

Performance has continued to improve during September 2015, with a constantly high number of health assessments completed (93.7%). This is way above the target of last month which was 85%. Therefore a more challenging target has been set at 95%. This is a stretched target and the service will work hard to achieve this.

Definition

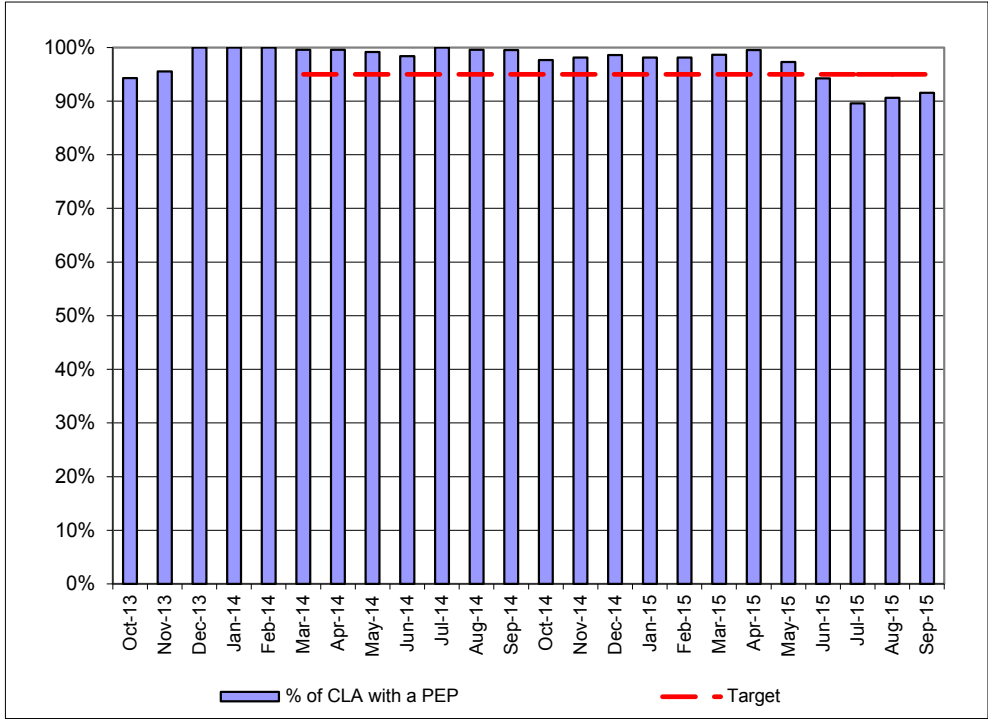
Of the children who had been in care for at least 12 months the proportion who had an annual health assessment during the previous 12 months.

**G >= 95%**      **A > 85%**      **R < 85%**

Year	PCC Result	SN Result	ENG Result
2012-13	85.4%	85.0%	87.3%
2013-14	93.9%	89.1%	88.4%
2014-15			

Chart 14

**Personal Education Plans (PEPs)** **Sep-15**



Month	Num.	Denom.	% YTD	Target	Variance	RAG
Oct-13	214	227	94.3%	95.0%	-0.4	A
Nov-13	213	223	95.5%	95.0%	-0.7	A
Dec-13	206	206	100.0%	95.0%	0.5	G
Jan-14	208	208	100.0%	95.0%	5.0	G
Feb-14	209	209	100.0%	95.0%	5.0	G
Mar-14	227	228	99.6%	95.0%	4.6	G
Apr-14	238	239	99.6%	95.0%	4.6	G
May-14	238	240	99.2%	95.0%	4.2	G
Jun-14	239	243	98.4%	95.0%	3.4	G
Jul-14	240	240	100.0%	95.0%	5.0	G
Aug-14	237	238	99.6%	95.0%	4.6	G
Sep-14	203	204	99.5%	95.0%	4.5	G
Oct-14	207	212	97.6%	95.0%	2.6	G
Nov-14	209	213	98.1%	95.0%	3.1	G
Dec-14	211	214	98.6%	95.0%	3.6	G
Jan-15	209	213	98.1%	95.0%	3.1	G
Feb-15	209	213	98.1%	95.0%	3.1	G
Mar-15	213	216	98.6%	95.0%	3.6	G
Apr-15	213	214	99.5%	95.0%	4.5	G
May-15	214	220	97.3%	95.0%	2.3	G
Jun-15	212	225	94.2%	95.0%	-0.8	A
Jul-15	206	230	89.6%	95.0%	-5.4	R
Aug-15	193	213	90.6%	95.0%	-4.4	A
Sep-15	195	213	91.5%	95.0%	-3.5	A

108

**CSC Commentary**  
 A number of PEP meetings took place in June , July , August and September but were not recorded on Liquid Logic by Social Workers. Designated Teachers are not available in August so initial PEPs will not have been completed for CYP coming into care during the summer . There have been some delays in the completion of PEPs for UASC due to the requirement for age assessments and change in placements. Social Workers have been reminded that PEPs should be completed whether or not there is an education placement and that PEP meetings need to be recorded on LL . Updated guidance for Social Workers for this task has been requested from LL support .

**Definition**  
 The denominator is the number of children looked after who are of school age. The numerator is of those children, the number that have a PEP added to the system.

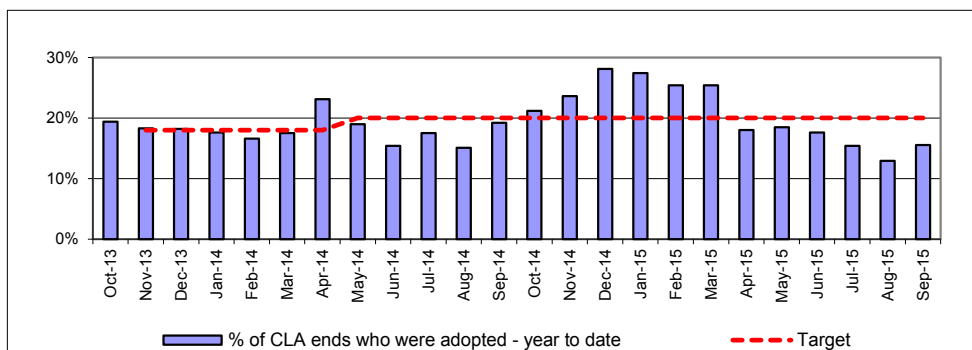
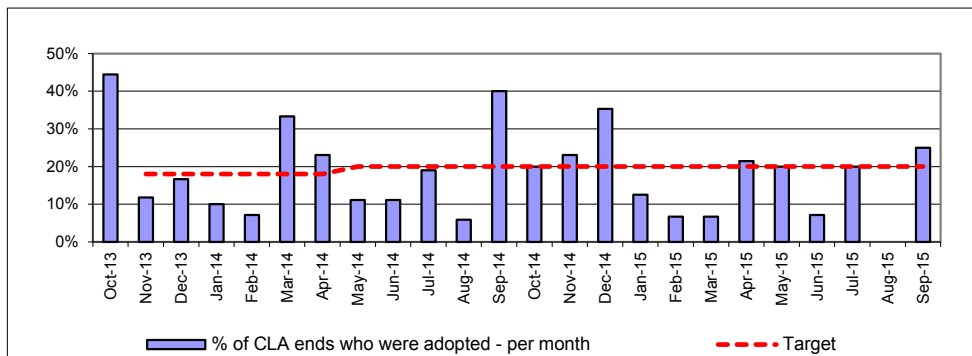
**G = 95%**      **A=95%-90%**      **R < 90%**

Year	PCC Result	SN Result	ENG Result
2012-13	-	-	-
2013-14	-	-	-
2014-15	-	-	-



Chart 15

**Percentage of children adopted** Sep-15



Month	Adop.	CLA Ends	% Mnth	% YTD	Target	Var	RAG
Oct-13	4	9	44.4%	19.4%	18.0%	1.4	A
Nov-13	2	17	11.8%	18.3%	18.0%	0.3	G
Dec-13	1	6	16.7%	18.2%	18.0%	0.2	G
Jan-14	1	10	10.0%	17.6%	18.0%	-0.4	G
Feb-14	1	14	7.1%	16.6%	18.0%	-1.4	G
Mar-14	3	9	33.3%	17.5%	18.0%	-0.5	A
Apr-14	3	13	23.1%	23.1%	18.0%	5.1	G
May-14	1	9	11.1%	19.0%	20.0%	-1.0	G
Jun-14	2	18	11.1%	15.4%	20.0%	-4.6	G
Jul-14	4	21	19.0%	17.5%	20.0%	-2.5	A
Aug-14	1	17	5.9%	15.1%	20.0%	-4.9	G
Sep-14	4	10	40.0%	19.2%	20.0%	-0.8	G
Oct-14	3	15	20.0%	21.2%	20.0%	1.2	G
Nov-14	3	13	23.1%	23.6%	20.0%	3.6	G
Dec-14	6	17	35.3%	28.1%	20.0%	8.1	G
Jan-15	2	16	12.5%	27.4%	20.0%	7.4	G
Feb-15	1	15	6.7%	25.4%	20.0%	5.4	G
Mar-15	1	15	6.7%	25.4%	20.0%	5.4	G
Apr-15	3	14	21.4%	18.0%	20.0%	-2.0	G
May-15	2	10	20.0%	18.5%	20.0%	-1.5	A
Jun-15	2	28	7.1%	17.6%	20.0%	-2.4	A
Jul-15	5	25	20.0%	15.4%	20.0%	-4.6	A
Aug-15	0	10	0.0%	12.9%	20.0%	-7.1	A
Sep-15	4	16	25.0%	15.5%	20.0%	-4.5	A

<b>YTD:</b>	<b>16</b>	<b>103</b>	<b>--</b>	<b>15.5%</b>	<b>20.0%</b>	<b>-4.5</b>	<b>G</b>
-------------	-----------	------------	-----------	--------------	--------------	-------------	----------

**CSC Commentary**

This indicator is one that changes month on month depending on the individual care planning arrangements for the child. The performance year to date is good.

**Definition**

The number of children adopted as a percentage of the number of children who ceased to be in care

<b>G =20%</b>	<b>A &gt;15%</b>	<b>R &lt; 15%</b>
---------------	------------------	-------------------

Year	PCC Result	SN Result	ENG Result
2012-13	13.0%	19.0%	14.0%
2013-14	18.0%	22.4%	17.0%
2014-15	19.0%	24.0%	17.0%

